



Alcorn
State University

*Policy Research Center At Alcorn State University
(Policy Center)*

Eloris D. Speight, Director

Socially Disadvantaged Farmers and Ranchers Policy Research Center

Policy Center



Alcorn
State University

- Created from 2014 Farm Bill
- Located at 1890 University
 - Alcorn State University—Lorman, MS
- Is a national center with a strategic focus on the 18 states with 1890s land-grant universities
- Why created?
 - Ensure data driven information available for SDFR
- Definition of SDFR



Mission

- Specializes in policy research impacting socially disadvantaged farmers and ranchers.
- Makes policy recommendations for farm bills and other agriculture policies that will improve the success of socially disadvantaged farmers and ranchers.



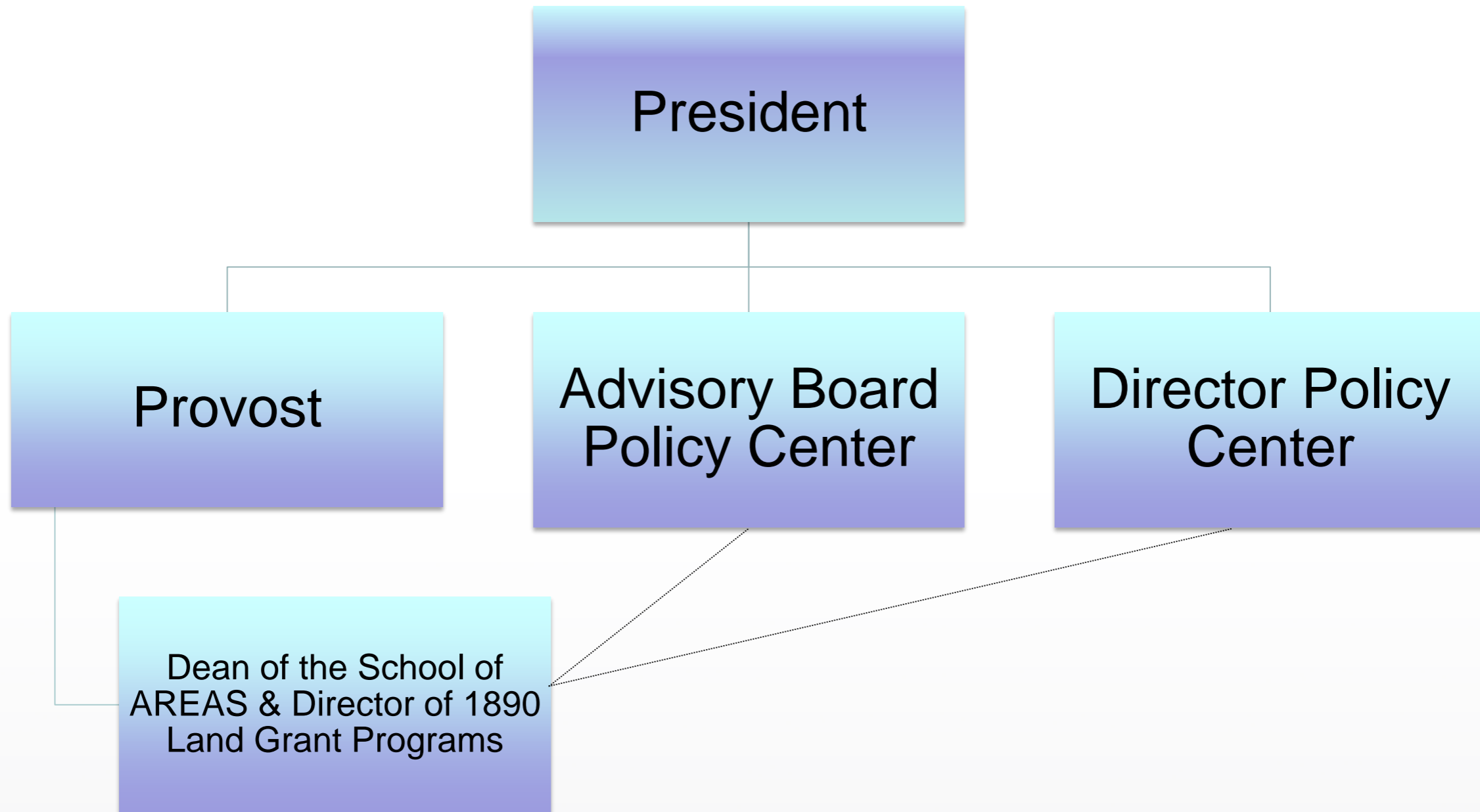
Alcorn
State University



Organization Chart – Socially Disadvantaged Farmers and Ranchers Policy Research Center at Alcorn



Alcorn
State University



Areas of Focus



Alcorn
State University

- Stakeholder Engagement
- Policy Development
- Research
- Outreach



Stakeholder Engagement



Alcorn
State University

- Working with
 - 61 Community-Based Organizations
 - 50% of 1890 Universities and 4 1862 Universities
 - 4 on Advisory Board (FAMU, SU, NCAT, PVAM)
 - 3 participating in Research Studies (TSU, PVAM, FAMU)
 - 5 provided Farm Bill Recommendations (Tuskegee, Lincoln, Langston, NCAT, KYSU)
 - USDA
 - Congressional Black Caucus (CBC)
 - Congressman Thompson/ Congresswoman Fudge



Outreach



Alcorn
State University

- Continuing to increase awareness of Policy Center
 - Mississippi/ Louisiana
 - Alabama/ Georgia
 - Tennessee/ Florida
 - Virginia/ Maryland
 - Arkansas/ Oklahoma
 - North Carolina/ South Carolina
 - New Mexico/ Texas
 - Michigan/Missouri
- All states with 1890 universities except
 - West Virginia, Delaware, Ohio, Kentucky
- Input from over 2500 SDFRs





Alcorn
State University

Focusing on Policy Research that Impacts Socially Disadvantaged Farmers and Ranchers

Cassandra Hawkins Wilder, Ph.D. ABD

Policy Research Analyst

Socially Disadvantaged Farmers and Ranchers Policy Research
Center

Research



Alcorn
State University

- Conduct research on agricultural policies and programs that impact socially disadvantaged farmers and ranchers.
- Contribute to the policy development process using research study findings.



Priority Research Areas-- Current



Alcorn
State University

- Impact of current agriculture policy on SDFR
- Participation of SDFR in USDA Programs
- Land Loss Among African American Farmers
- Access to and use of technology



Priority Research Areas-- Future



Alcorn
State University

- Original Four Areas +
- Youth Programs and Pipeline
- Community and Urban Agriculture



Policy Development



Alcorn
State University

- 11/17 CBC sent priorities to House Agriculture and Ranking Member
- Participate in Farm Bill hearings and listening sessions
- Meet with agriculture committee members/representatives



Policy Center Recommendations

*Priorities



Alcorn
State University

1. Retain all existing policies for SDFRs
2. Fund Policy Center to allow for evaluation of:
 1. USDA program guidelines on SDFRs
 2. Conservation ranking criteria for SDFRs
 3. Census data for accuracy
 4. Pigford lawsuit impact
3. USDA to create programs to stop the decline of SDFRs and address heir property, wills, and estate planning
4. Fund 2501 with CCC funds at \$30m per year
 1. Distinguish amounts for SDFRs (\$20M) and Veterans (10M)
 2. CBC Proposed funding at \$50m per year



Contact Information



Alcorn
State University

Eloris D Speight—Center Director

Email: espeight@alcorn.edu

Cassandra H. Wilder, Ph.D. ABD—Research Analyst

Email: chwilder@alcorn.edu

Phone: 601-877-6601

Website: www.alcorn.edu/policycenter