



RESERVE BANK OF AUSTRALIA

Collection of Anecdotal Information and its Application to the Policymaking Process

David Orsmond

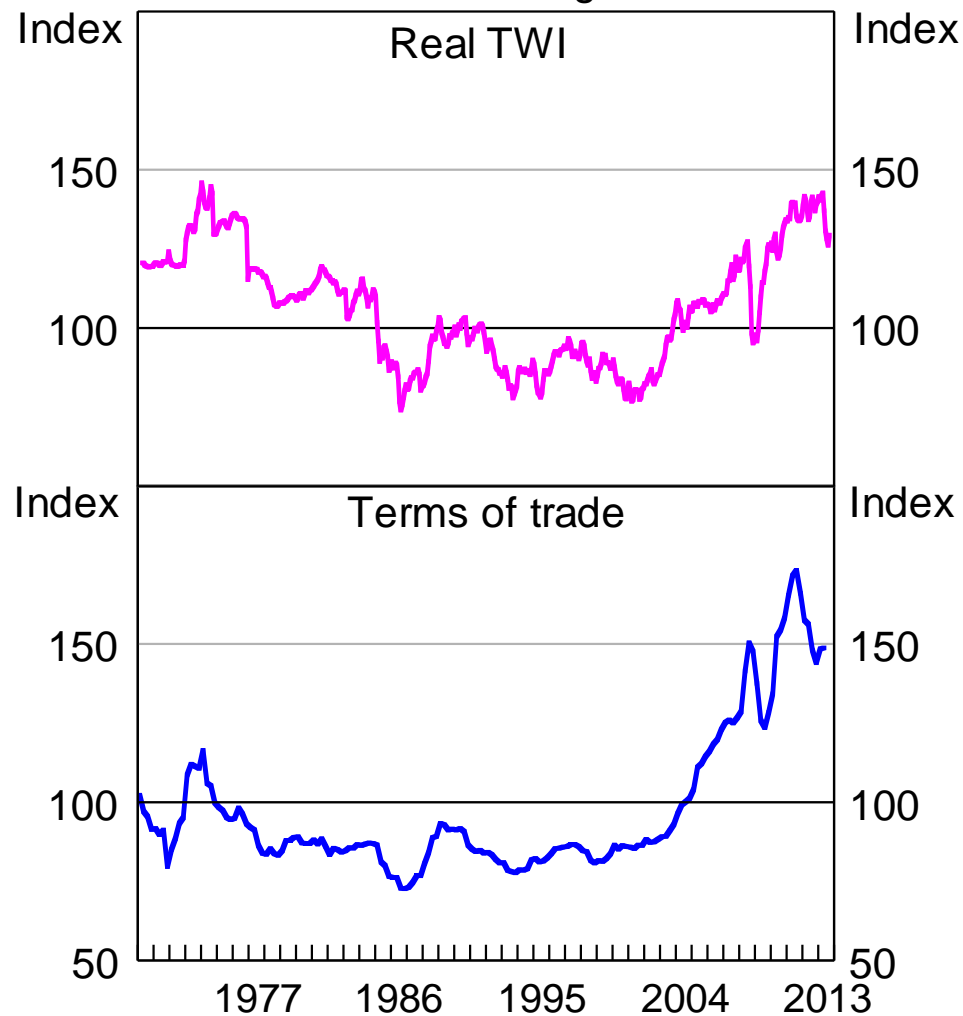
Reserve Bank of Australia

October 2013



Real Exchange Rate and Terms of Trade

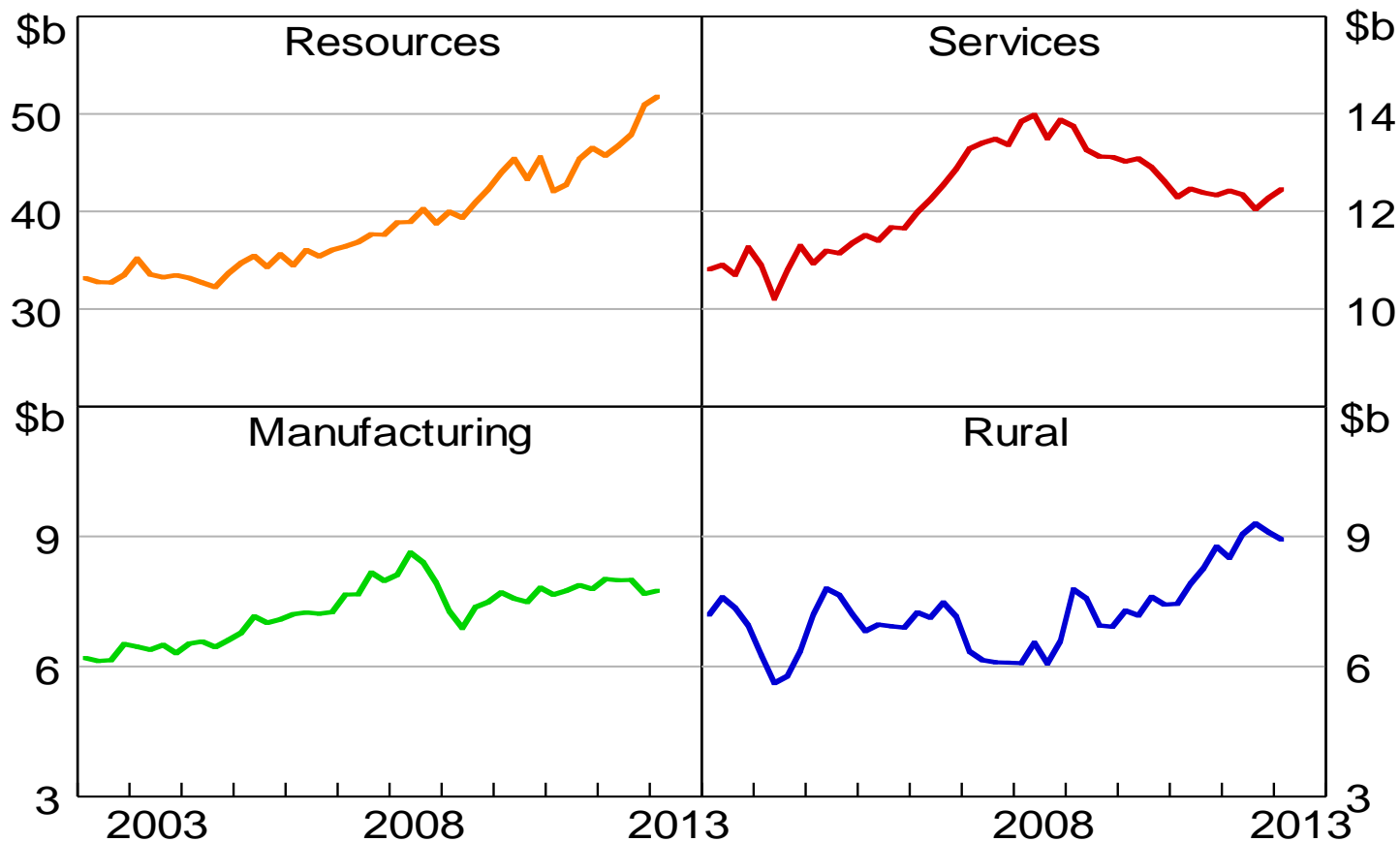
Post-float average = 100





Export Volumes*

Quarterly

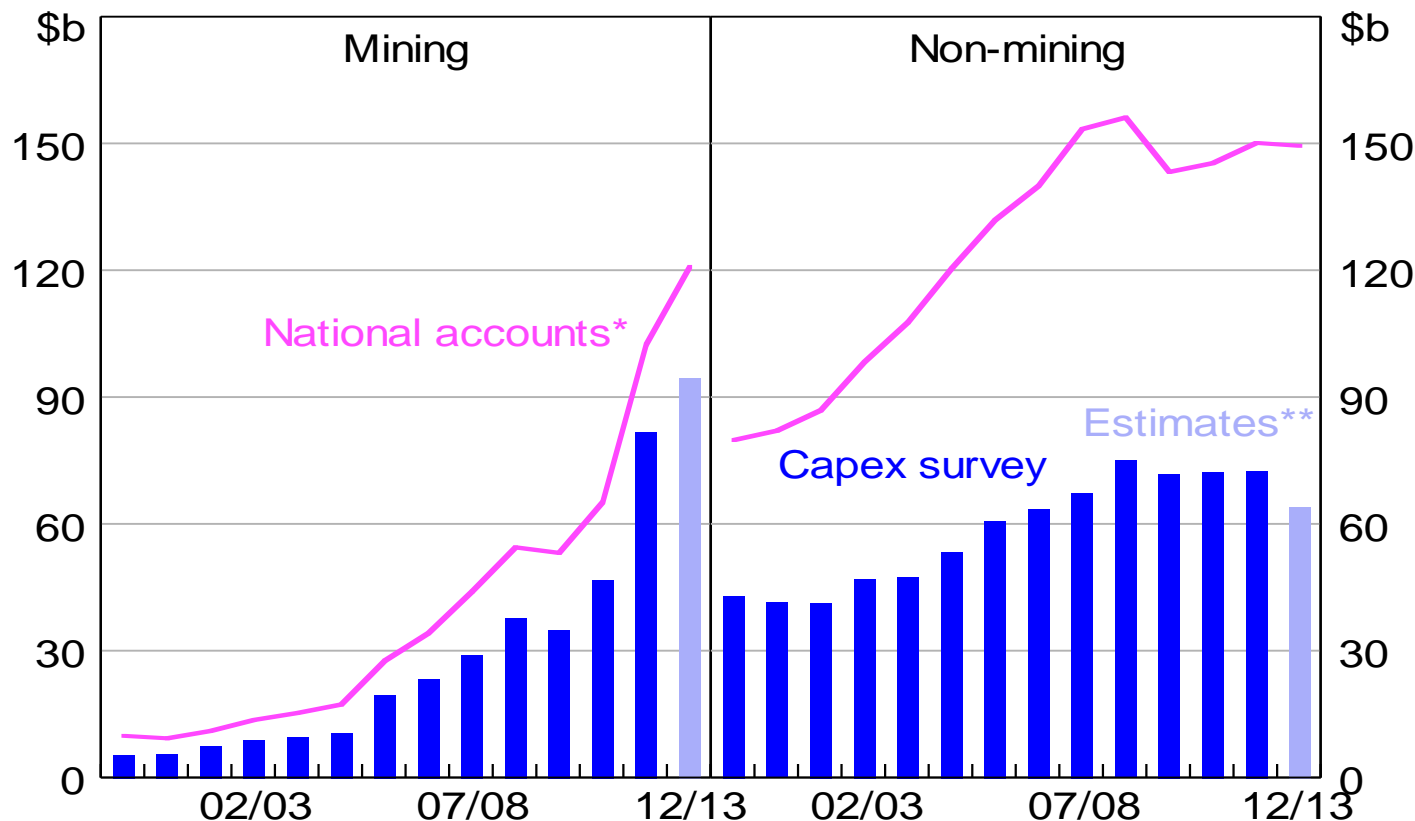


* 2010/11 prices
Sources: ABS; RBA



Measures of Business Investment

Nominal



* RBA estimates for 2012/13

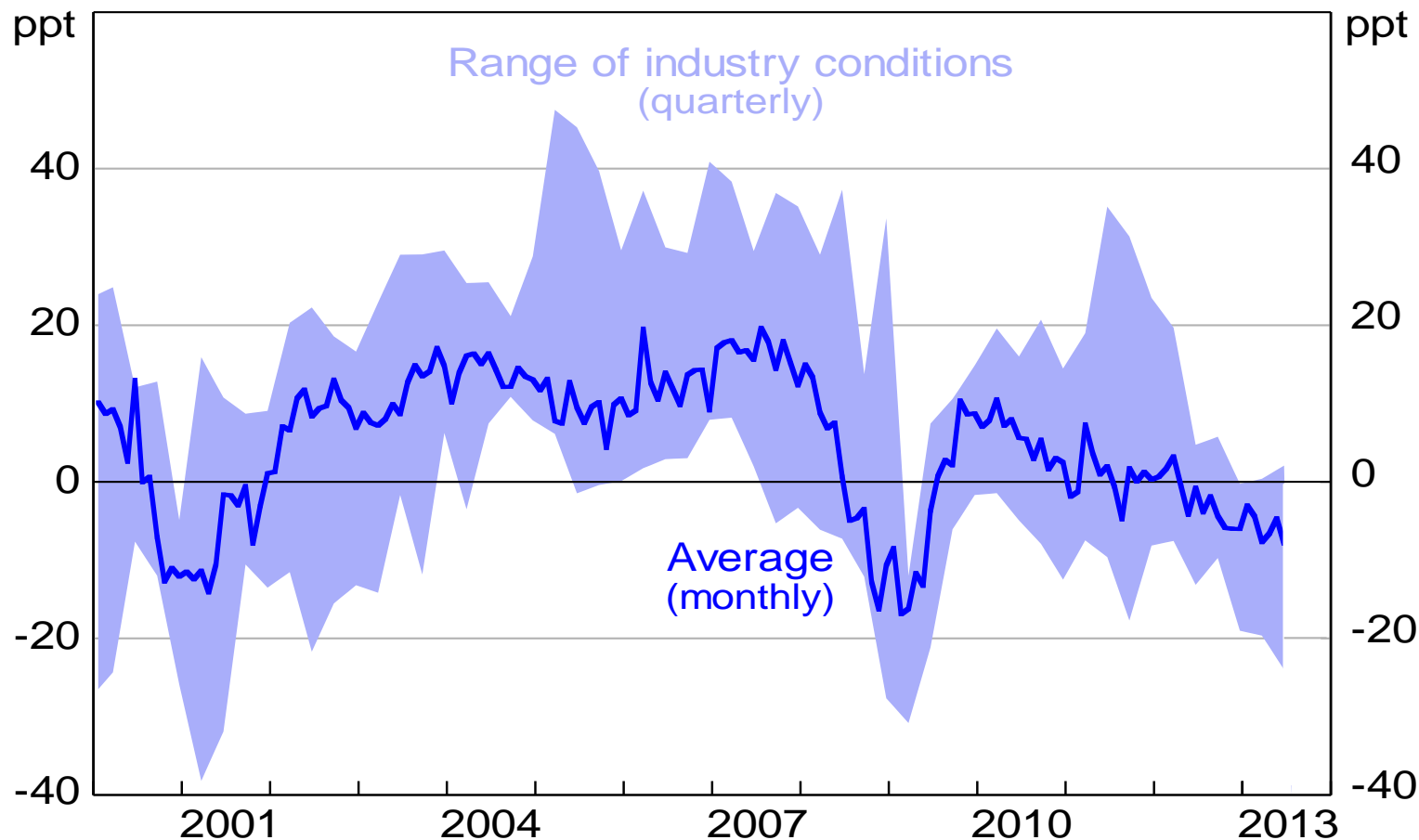
** Estimates are firms' expected expenditure in 2012/13, adjusted for the past average difference between expected and realised spending

Sources: ABS; RBA



Business Conditions by Industry

Net balance, deviation from industry average since 1989



Sources: NAB; RBA

Regional and Industry Analysis
Total Interviews by Industry - Year to July 2013

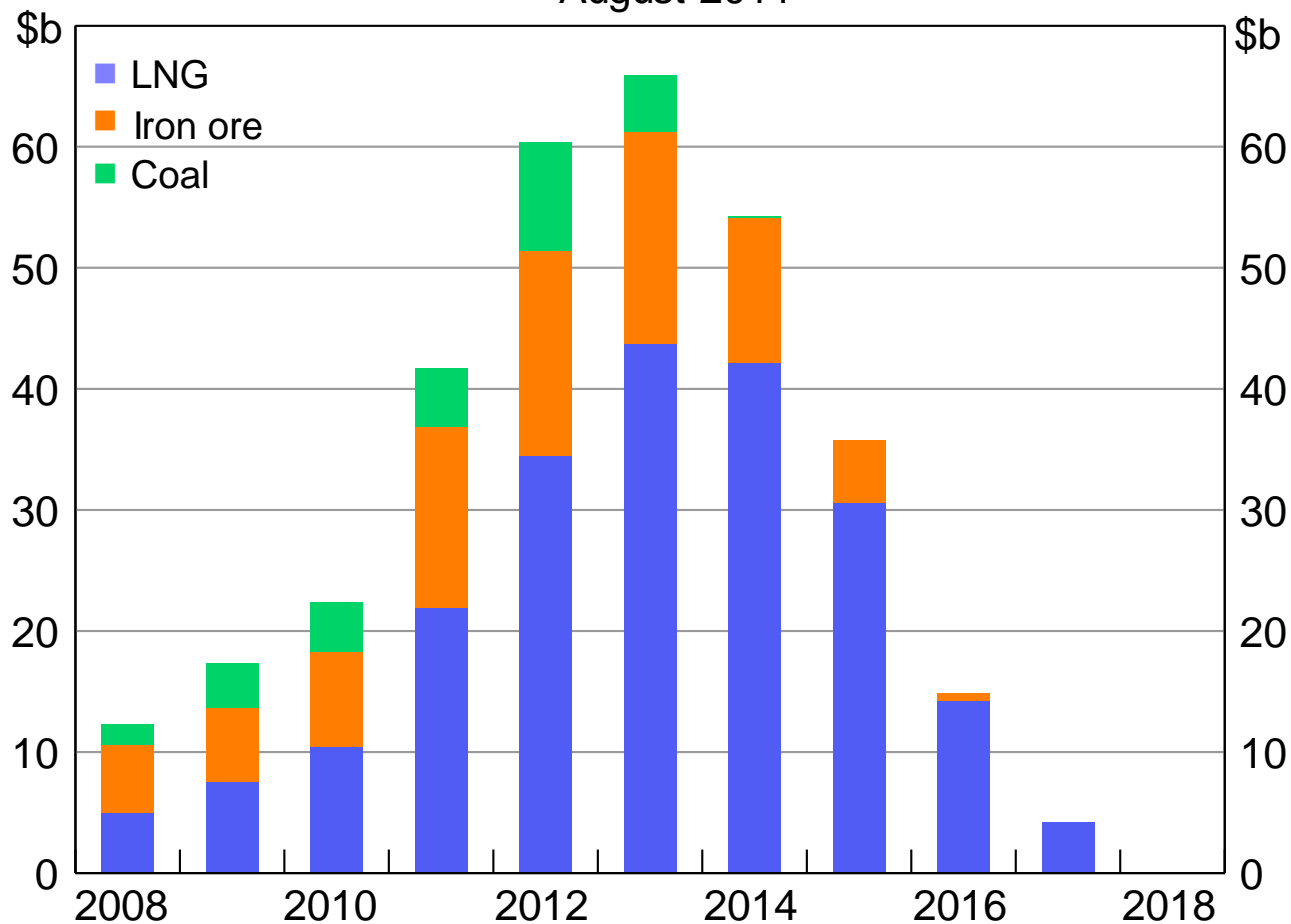
	By Office						Share by industry
	NSW	QLD	SA	Vic	WA	Total	Per cent
Industry							
Mining	1	2	14	3	20	40	7
Construction	13	11	14	12	14	64	11
Business services	41	27	24	15	32	139	24
Manufacturing	11	13	6	19	6	55	9
Tourism	2	0	6	2	0	10	2
Agriculture	4	1	6	1	1	13	2
Household services	22	17	19	4	11	73	12
Transport and storage	9	3	18	5	6	41	7
Wholesale and retail trade	41	46	18	37	4	146	25
Total	145	120	126	102	69	589	100

Source: REGI



Total Resource Investment*

August 2011



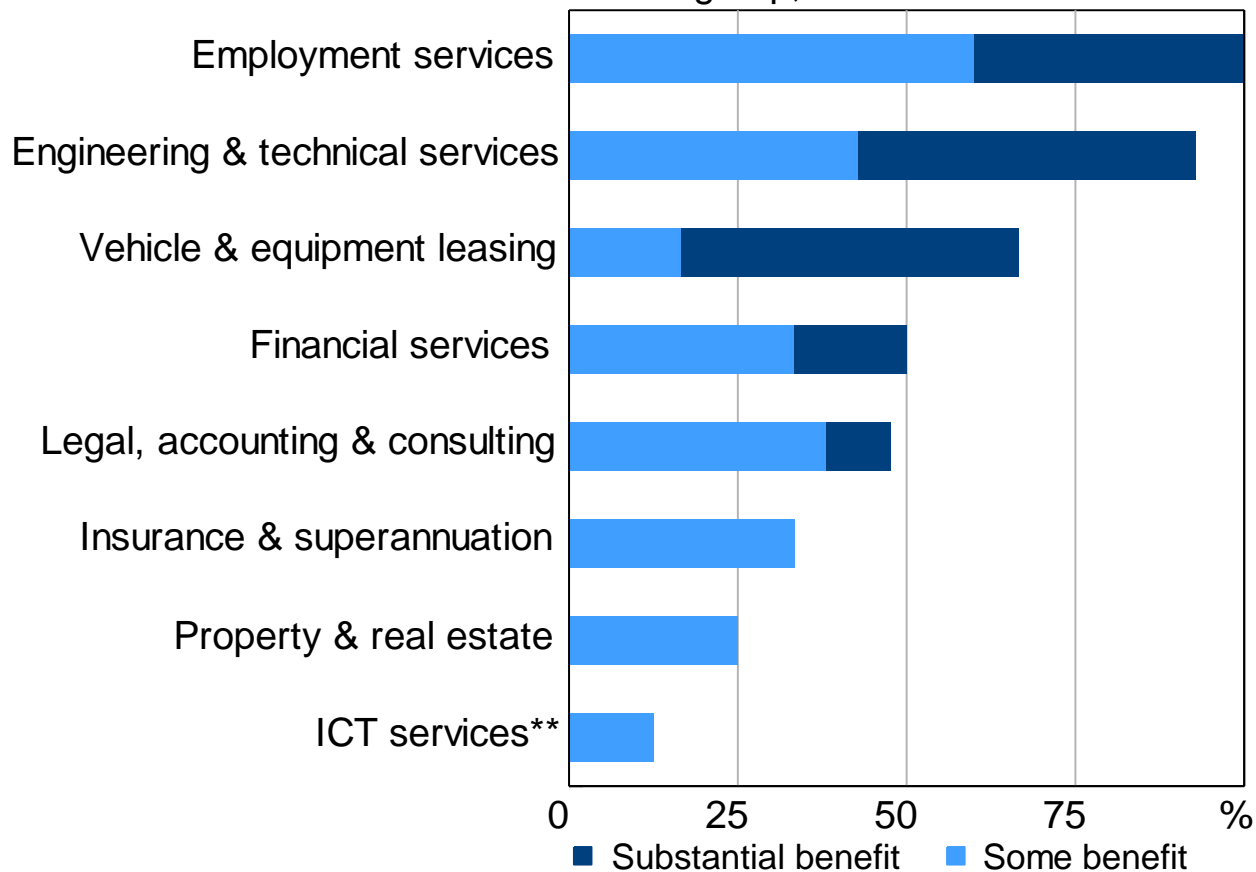
* Committed and likely

Sources: Company announcements, RBA liaison



Firms Benefiting from the Mining Boom*

Per cent of firms in subgroup, 2011/12



* Includes business services firms contacted by the RBA; the shares and responses of firms may not represent the entire sector

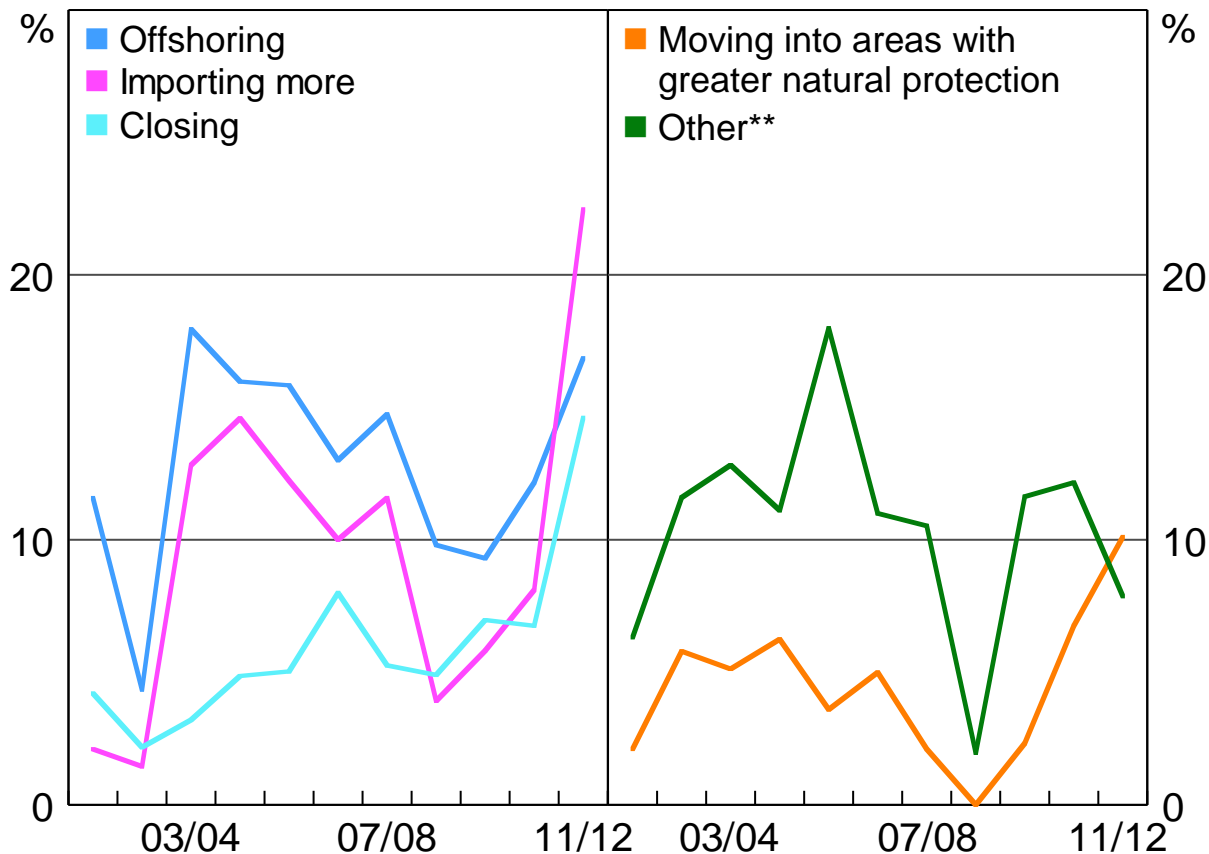
** Information and communication technology services

Source: RBA



Types of Structural Change*

Per cent of manufacturing interviews in financial year



* Can have multiple responses per interview

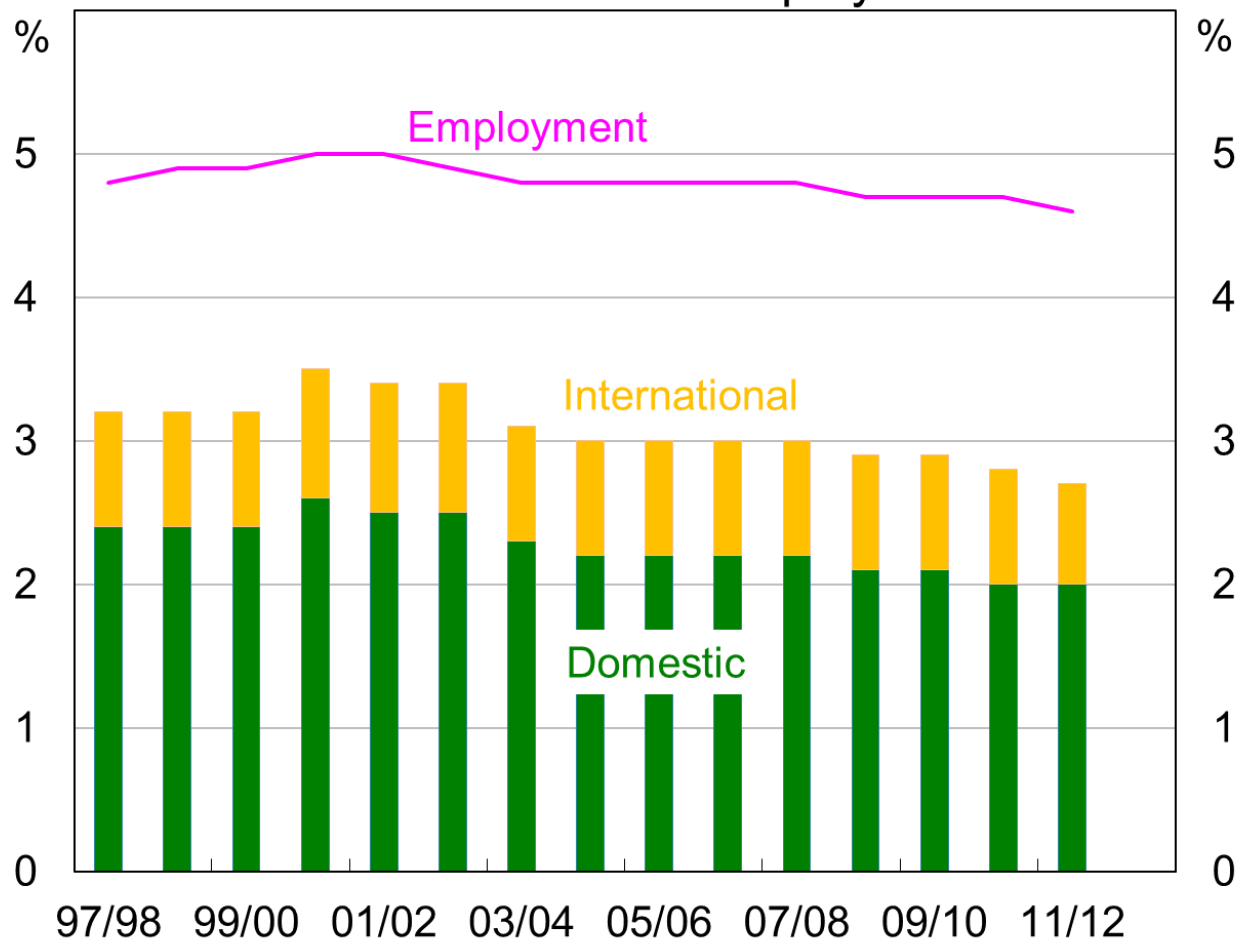
** Includes diversifying, ceasing exports, increasing domestic market share and raising prices

Source: RBA liaison



Tourism Output and Employment

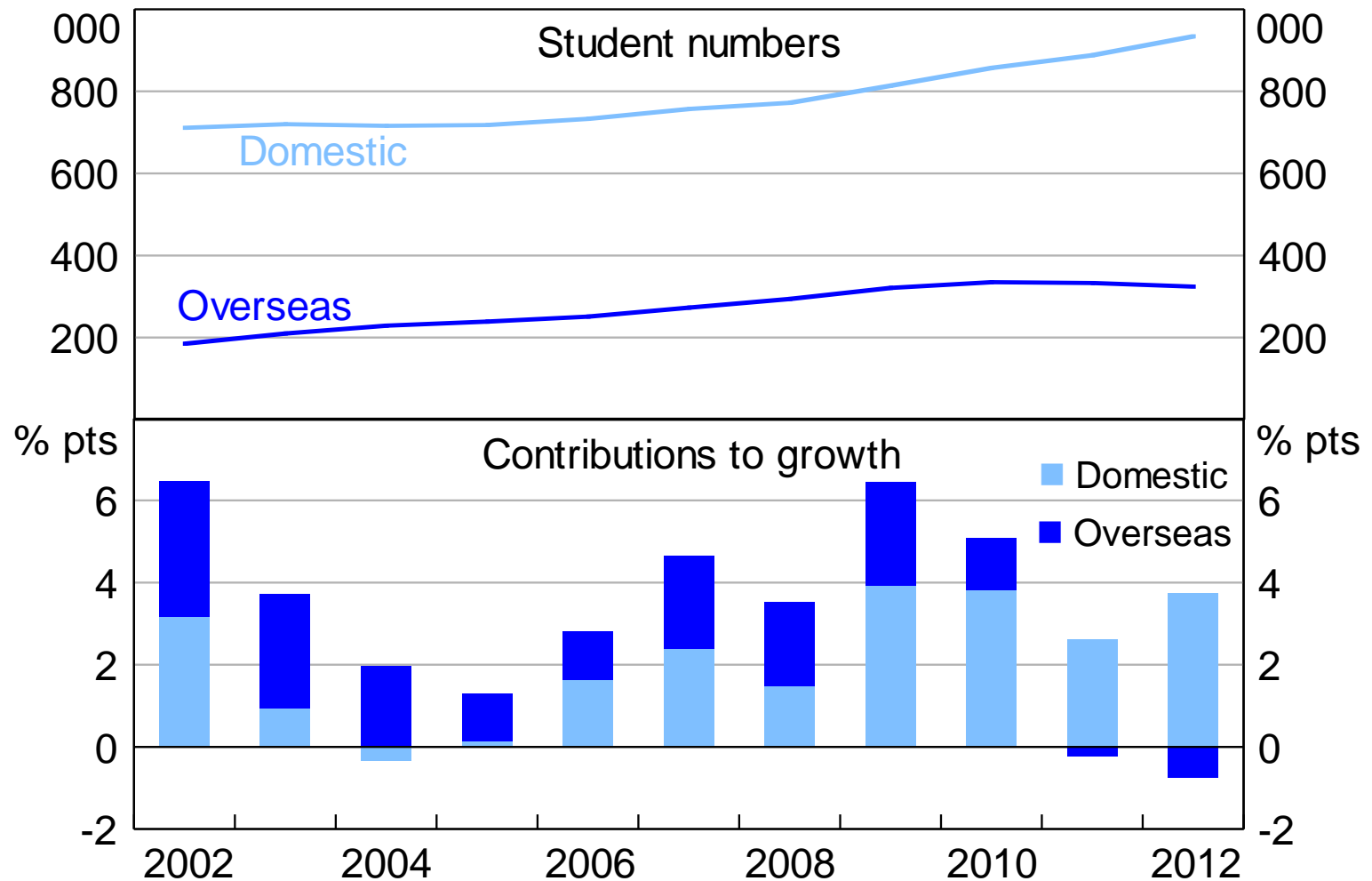
Shares of GDP and employment



Source: ABS



Higher Education Students

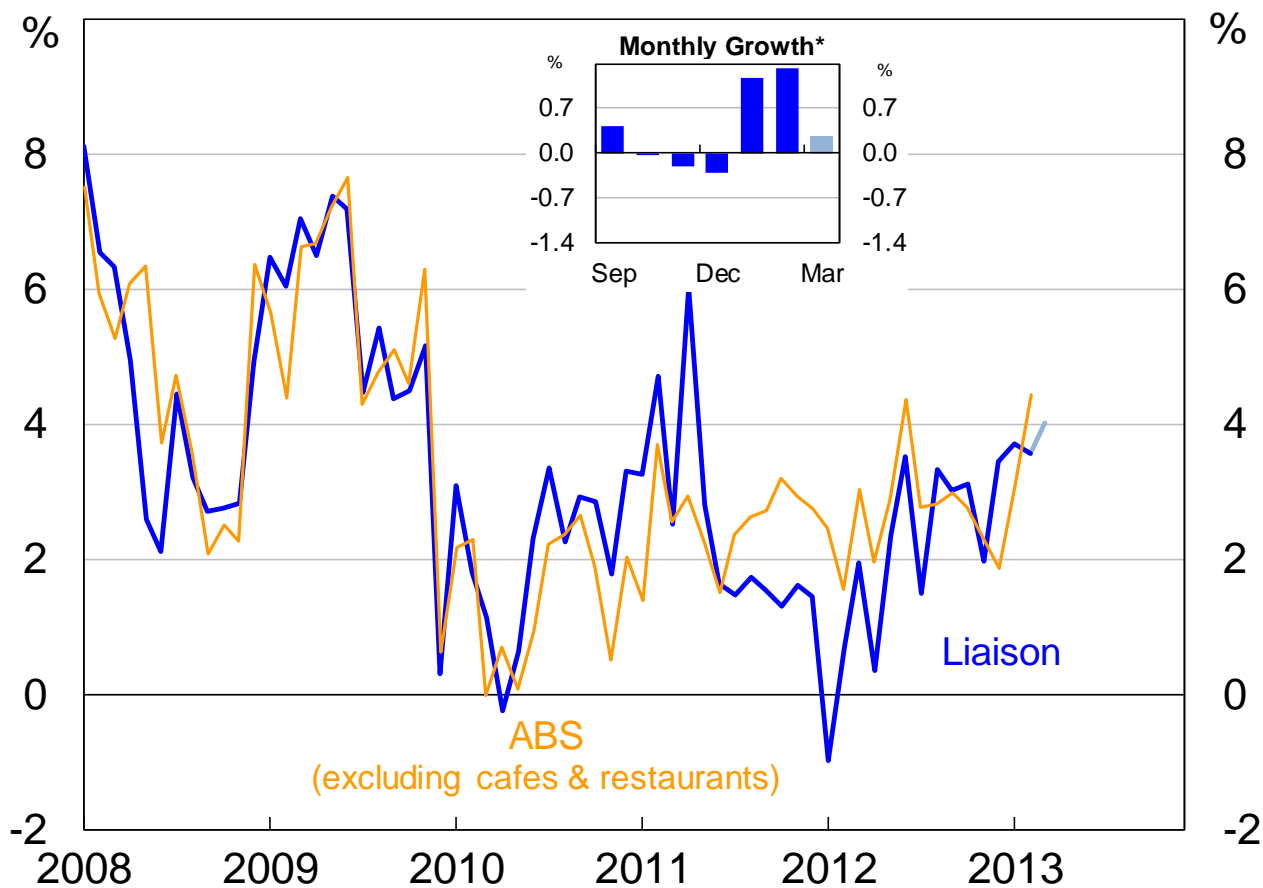


Source: DIICSRTE



Retail Liaison - Reported Growth

Year-ended



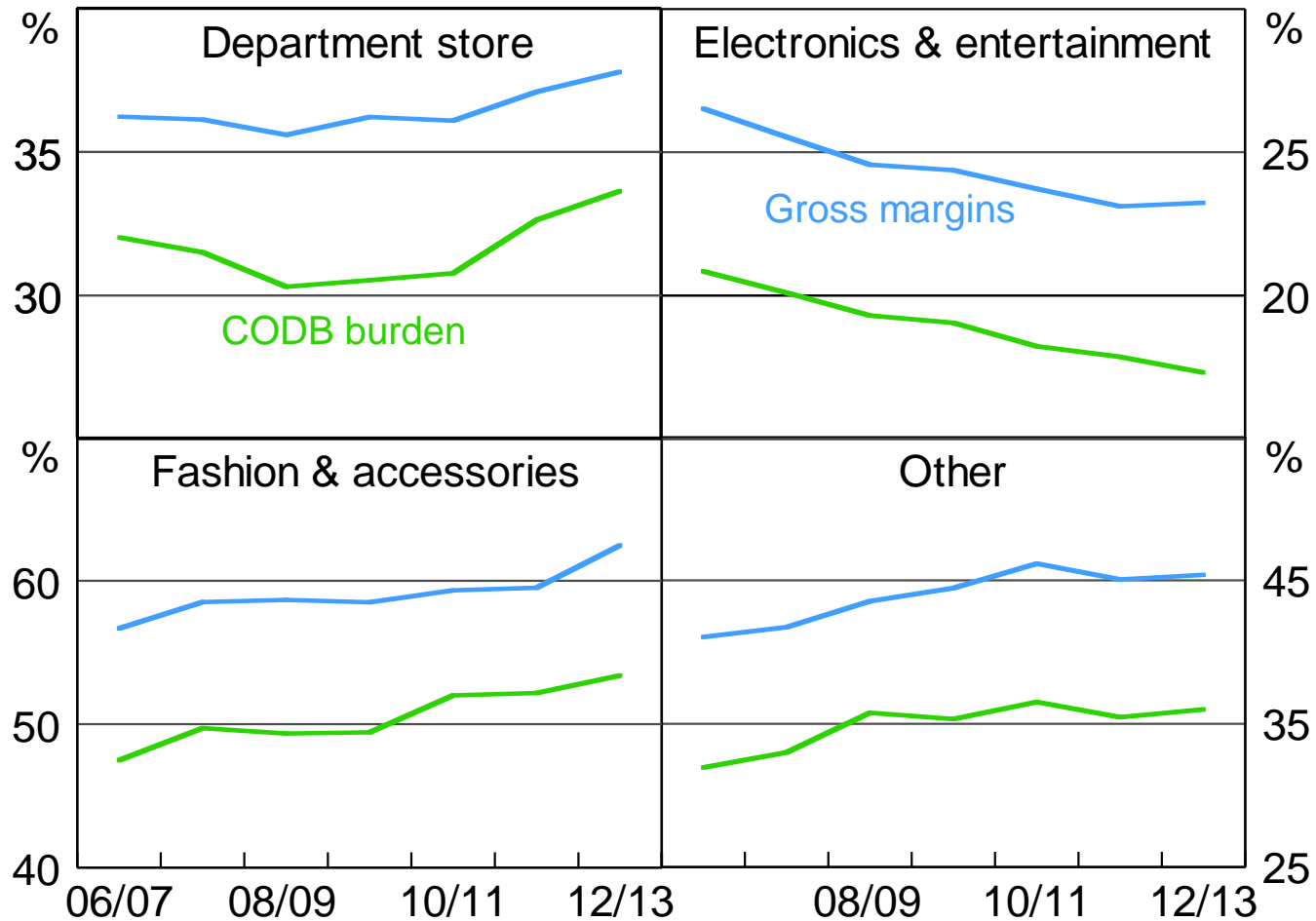
* Dark blue is ABS data; light blue is liaison estimate

Sources: ABS; RBA



Margins by Retail Category

Aggregate ratio

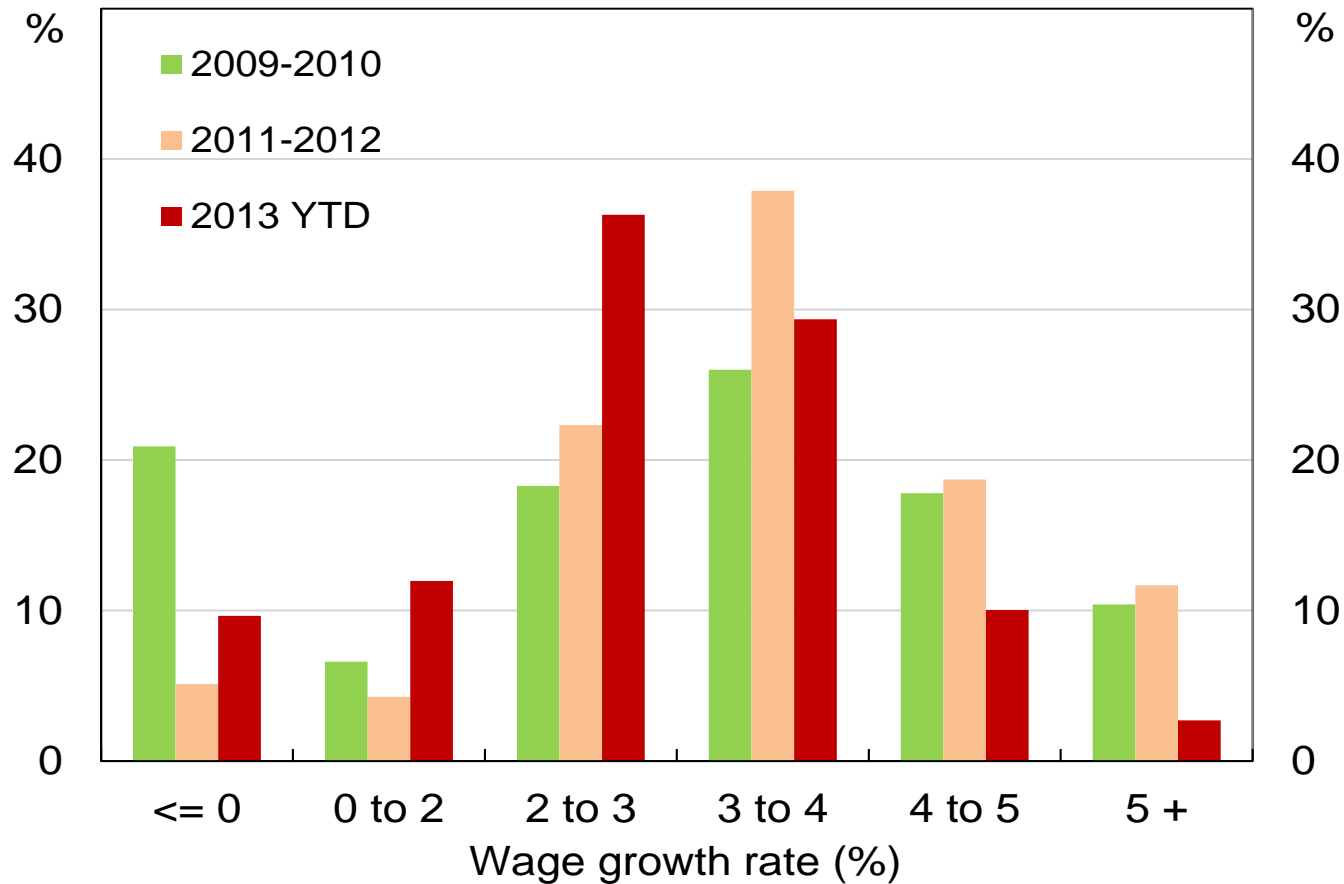


Sources: Annual reports, Morningstar, RBA



Distribution of Wage Growth Outcomes

As a share of firms reporting wage data in liaison

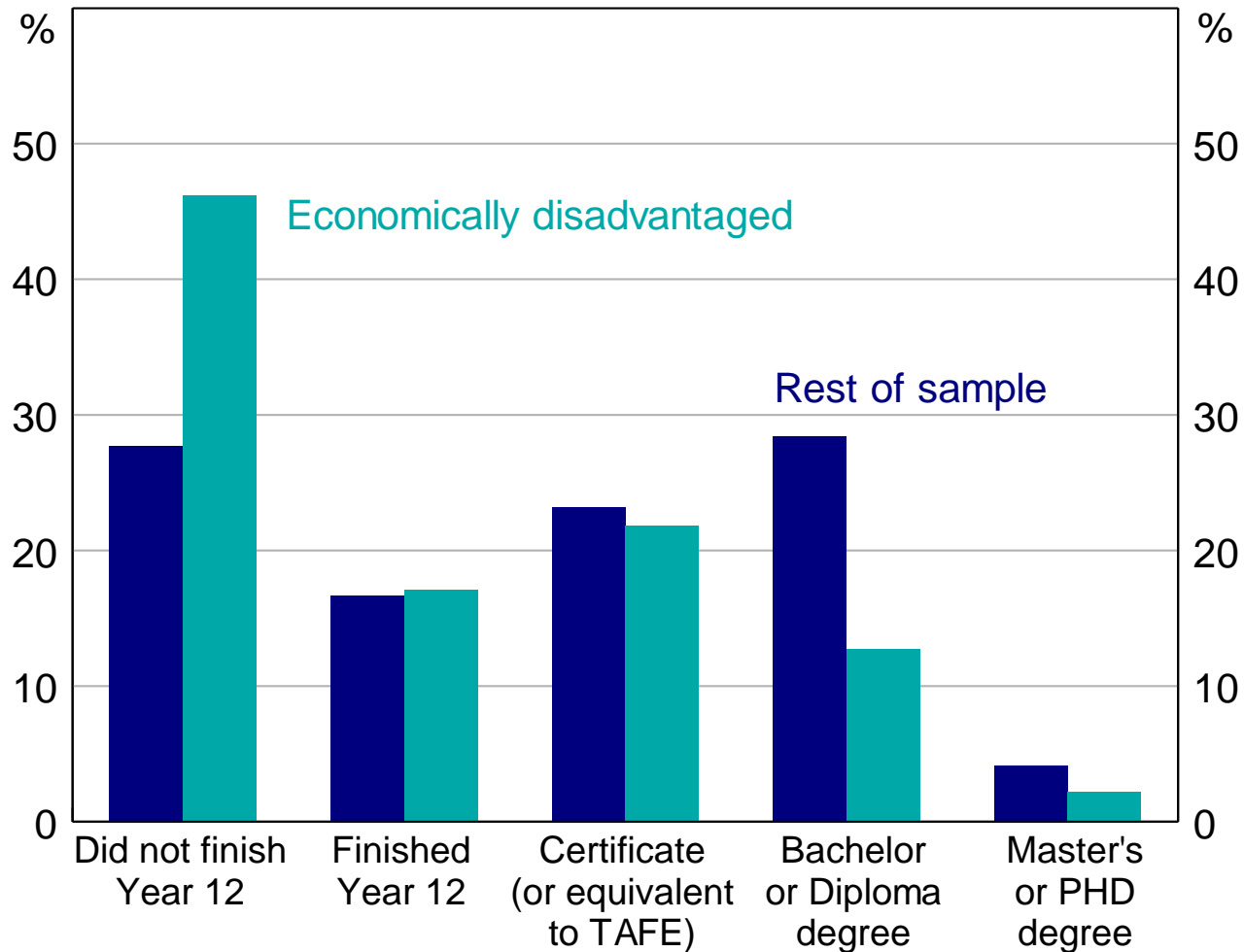


Source: RBA



Education Attainment

Share of sample, 2011



Source: HILDA release 11.0